

PROJECT :

FIXTURE :

ELUME SLIMCAB ELEVATOR LED FIXTURE

- CUSTOMIZABLE (DIMENSIONS, LIGHT OUTPUT & KELVIN COLOUR)
- DIMMABLE WARM, NEUTRAL AND DAYLIGHT WHITE OPTIONS
- OPTIONAL CLASS A OR CLASS B DIFFUSION AND/OR EMERGENCY BATTERY BACK UP
- SUPERIOR, GLARE FREE, HIGH OUTPUT, UNIFORM ILLUMINATION
- THIN, LOW PROFILE DESIGN EASILY RECESSES INTO CAB DROP CEILINGS
- PLUG & PLAY OR HARDWIRED
- MAINTENANCE FREE
- 3 YEAR WARRANTY



ELUME SLIMCAB FIXTURE

SPECIFICATION SHEET PAGE 1 : ELUME SLIMCAB ELEVATOR DIFFUSED LED LIGHT PANEL - MODEL : ELP-SF30

CUSTOM SLIMCAB ELEVATOR LED LIGHT FIXTURE - MODEL: ELP-SF30

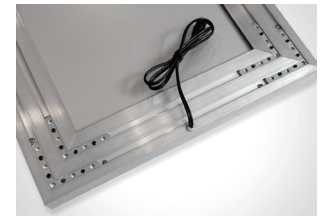
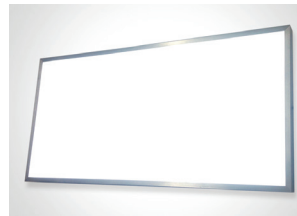
Our 1.1" thin, eLume LED Slimcab Elevator Light Panel Fixtures are enclosed in an aluminum framing with integral proprietary Class B polycarbonate diffusion lens or alternative Class A diffusion material designed to output a perfectly uniform, bright, edge to edge white illumination evenly diffused across the surface of the panel that easily recesses into your custom elevator cab's drop ceiling.

DROP CEILING READY, CUSTOM ELEVATOR CAB LIGHTING SOLUTION

Available in Warm White, Neutral White and Daylight White our SlimCab LED Panel Fixtures are custom manufactured specific to the dimensions that your elevator cab requires ensuring the most resilient and uniform output optimized for drop ceiling elevator lighting.

We encourage you to contact us to discuss your custom elevator's cab lighting requirements with one of our knowledgeable design associates prior to specifying.

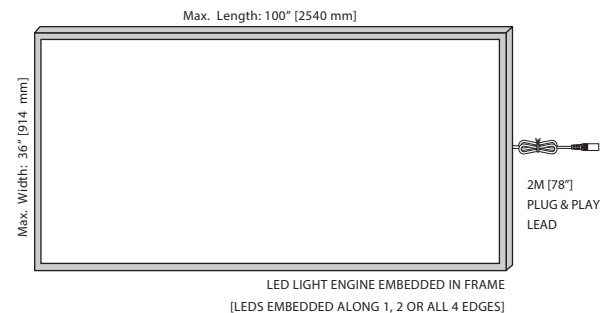
PRODUCT IMAGES:



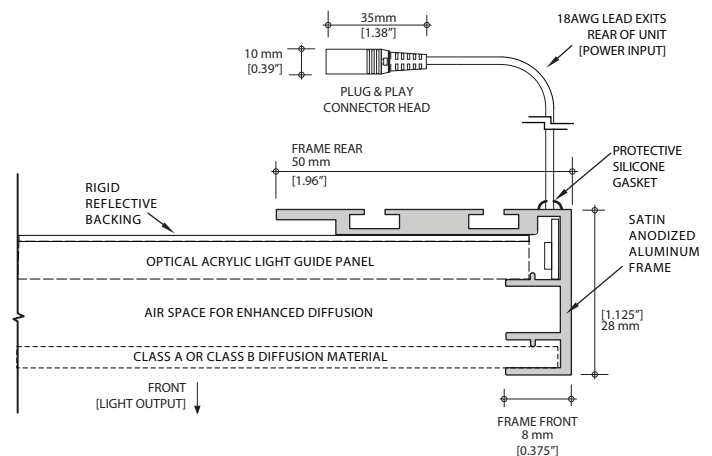
SPECIFICATIONS: * PLEASE CONTACT ELUMANATION FOR FURTHER INFO

MODEL :	ELP-SF30
OUTPUT LEVELS :	MAX-HIGH [MH] OR EXTREME [E]
OUTPUT SOURCE :	LEDS EMBEDDED ALONG 1, 2 OR ALL 4 EDGES
OUTPUT COLOUR OPTIONS :	DAYLIGHT: 5800K
	NEUTRAL: 4100K [RECOMMENDED]
	WARM: 3000K
	RGB : DMX ADDRESSABLE COLOUR EFFECTS
	STATIC COLOURS: RED, GREEN OR BLUE
DIMMING OPTIONS :	0~10V, PWM, DALI OR WIRELESS REMOTE
*MORE INFO AVAILABLE UPON REQUEST	*REQUIRES ADDITIONAL INLINE DIMMING MODULE
APPROX WEIGHT :	2.4 Lbs [1.08 kg] / SqFt
MIN DIMENSIONS:	8 X 12" [203 x 304 mm]
MAX DIMENSIONS:	36" x 100" [914 x 2540 mm]
MATERIAL :	OPTICAL CAST ACRYLIC IN AN ALUMINUM FRAME W/ CLASS B PC OR CLASS A DIFFUSION LENS MATERIAL
*SPECIAL ORDER FOR CLASS A DIFFUSION	
FIXTURE THICKNESS :	28 mm [1.12"]
FRAME STYLE :	FRAMED SF30 - DOUBLE CHANNEL REAR w/ AIR SPACE
MOUNTING :	RECESSED IN DROP CEILING *CONTACT US FOR INFO
OPERATING LIFESPAN:	UPTO 70,000 HOURS [L70]
WARRANTY :	3 YEARS
ENVIRONMENT :	DRY LOCATION ONLY
OPERATING TEMPERATURE :	-30°C [-22 °F] ~ +40 °C [+104 °F]
OPERATING VOLTAGE :	24VDC
POWER CONSUMPTION :	[MH] - 17W/M [5.2W/Ft] [E] - 25W/M [7.6W/Ft]
ELECTRICAL ARRANGEMENT :	*WIRING SCHEMATICS PROVIDED PER PROJECT
INPUT CONNECTOR :	22" [558 mm] PLUG & PLAY FEMALE BARREL LEAD
INPUT LEAD WIRE SIZE :	18 AWG 2 CONDUCTOR WIRE
POWER SUPPLY OPTIONS :	HARDWIRED OR COMPACT PLUG & PLAY
*MORE INFO AVAILABLE UPON REQUEST	*BASED ON LOAD REQUIREMENTS & PREFERENCE
ELECTRICAL SAFETY CERTIFICATION :	UL CERTIFIED

FRONT ELEVATION:



SIDE SECTION:



PROJECT :

FIXTURE :

ELUME SLIMCAB ELEVATOR LED FIXTURE

- CUSTOMIZABLE (DIMENSIONS, LIGHT OUTPUT & KELVIN COLOUR)
- DIMMABLE WARM, NEUTRAL AND DAYLIGHT WHITE OPTIONS
- OPTIONAL CLASS A OR CLASS B DIFFUSION AND/OR EMERGENCY BATTERY BACK UP
- SUPERIOR, GLARE FREE, HIGH OUTPUT, UNIFORM ILLUMINATION
- THIN, LOW PROFILE DESIGN EASILY RECESSES INTO CAB DROP CEILINGS
- PLUG & PLAY OR HARDWIRED
- MAINTENANCE FREE
- 3 YEAR WARRANTY



ELUME SLIMCAB FIXTURE

SPECIFICATION SHEET PAGE 2 : ELUME SLIMCAB ELEVATOR DIFFUSED LED LIGHT PANEL - MODEL : ELP-SF30

PLEASE NOTE: Elumination also offers custom, thin, Elume LED Light Panels for back lighting translucent wall panels for unique cab designs. Contact us for more info.

CUSTOMIZABILITY

Each fixture is custom fabricated to your provided dimensions and optimized to meet specific light level requirements and with multiple kelvin temperature options to best suit each project's elevator cab's specific design requirements.

EMERGENCY BACK UP SYSTEMS

Operating at 24Vdc our Elume Elevator SlimCab Fixtures are compatible with the majority of existing battery back up systems or alternatively utilize Elumination's emergency battery back up system for a complete solution.

EMBEDDED LED ARRANGEMENTS:

LEDS EMBEDDED ALONG 1, 2, or ALL 4 EDGES

To ensure the ideal output specifications for your project each Elevator SlimCab LED Light Fixture is custom fabricated with the option of embedding LEDs along 1 edge, 2 opposing edges or along all 4 edges.

ILLUMINATION OUTPUT & DIMMABILITY

With our various output level options with various kelvins and dimming methods, our Elevator SlimCab fixtures are optimized to the ideal light level required to meet code and your client's illumination level preferences.

DESIGN ASSISTANCE

Our well versed and experienced in the elevator industry design consultants and technicians offer assistance throughout the project to meet your functional requirements and achieve your aesthetic elevator lighting objectives.

UNIFORM DIFFUSED ILLUMINATION

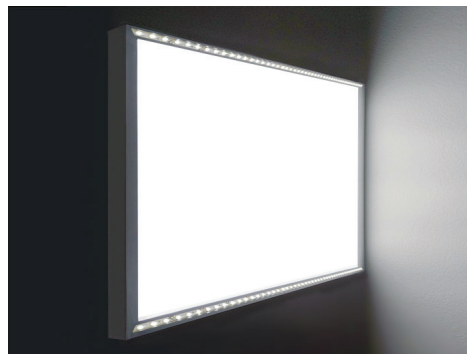
Internally each SlimCab's LED Light Fixture's light distribution is optimized by Elumination's proprietary algorithm to ensure maximum uniformity across each SlimCab's diffused surface.

PLEASE NOTE: LEDs shown in the images are for demonstration purposes only and are not visible on the final product.



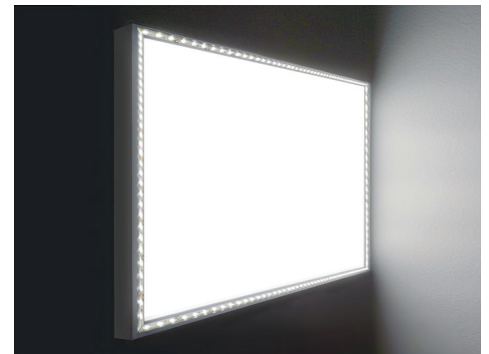
LEDS EMBEDDED ALONG 1 EDGE

To eliminate any slight drop off associated with larger fixtures and LEDs embedded along ONE edge we typically only recommend SlimCab Fixtures with LEDs embedded along ONE edge for panels 15" [381 mm] or less in width to ensure uniform illumination across the surface of the panel.



LEDS EMBEDDED ALONG 2 LONG EDGES

For larger SlimCab fixture's, LEDs embedded along TWO opposing edges coupled with Elumination's proprietary light guide distribution grid optimization algorithm specific to each SlimCab fixture, the optimized air space and selected diffusion lenses ensure maximum uniformity with superior illumination levels.



LEDS EMBEDDED ALONG ALL FOUR EDGES

For larger SlimCab Fixtures square or near square in shape or for applications that require maximum light output, LEDs embedded along ALL FOUR edges coupled with our proprietary light guide distribution grid optimization algorithm specific to each SlimCab fixture, the optimized air space and selected diffusion lenses ensure maximum uniformity with superior illumination levels.

ORDERING SPECIFICATIONS: EXAMPLE : ELP-SF30-E/36X100/2xNW

MODEL#	OUTPUT:	DIMENSIONS: [L x W"]	LED LOCATION:	LIGHT COLOUR:	PLEASE NOTE:
ELP-SF30	- MH - MAX-HIGH - E - EXTREME	/***X*** - LENGTH x WIDTH	/1 - LEDS ON 1 LONG EDGE /2 - LEDS ON BOTH LONG EDGES /4 - LEDS ON ALL 4 EDGES /C - CUSTOM* *PLEASE CONTACT US	x DW - DAYLIGHT WHITE - 5800K x NW - NEUTRAL WHITE - 4100K x WW - WARM WHITE - 3000K x RGB - ADDRESSABLE COLOURS* x CC - CUSTOM COLOUR* *PLEASE CONTACT US	*FOR ALL CUSTOM LED PANELS WE HIGHLY RECOMMEND CONTACTING ELUMANATION PRIOR TO SPECIFICATION TO ENSURE ALL MATERIAL AND HARDWARE REQUIREMENTS ARE PROPERLY MET.
www.elumination.com T: 1. 416.225.6400			1621-38 McEwen Drive, Whitby, ON. Canada L1N 9A5 info@elumination.com		